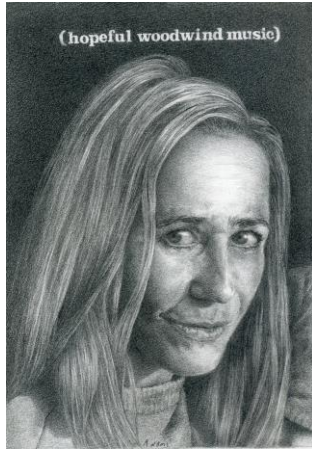


South County Art Association Instructor

Lisa Lyman Adams



www.lisaadamsart.com

Lisa Adams has been making art since she could hold a pencil. A Manhattan-based illustrator for 26 years, Lisa relocated to Mystic, CT where she resumed her career as a fine artist represented by the Diane Birdsall Gallery in Old Lyme, CT and Marfa, TX. In addition to multiple solo and group shows at Birdsall's gallery, Lisa also has exhibited in New York's Chelsea Onishi Project gallery, Avondale Arts, Watch Hill, RI and continues to exhibit in group shows in New York and along the Southeast coast of New England. Represented in New York for her magazine and book cover illustrations she juggles her fine art commissions for drawings and paintings as well as art instruction at the Mystic Museum of Art. There, she teaches the Nuts & Bolts of Drawing, Watercolor Essentials for adults and Drawing & Painting Fundamentals for kids. Adams' unique style of imagery- combining super-realism, collage, naive drawing and artist' handwriting overlap in both disciplines yet it is her love of pencil drawing that dominate her sensibilities. Adams' dedication to working in a photo-realistic style combined with an intense interest in graphite has enabled her to explore the basic fundamentals of realism drawing with graphite pencil. Lisa holds a BFA from Pratt Institute, Brooklyn, NY and is a Vermont native.